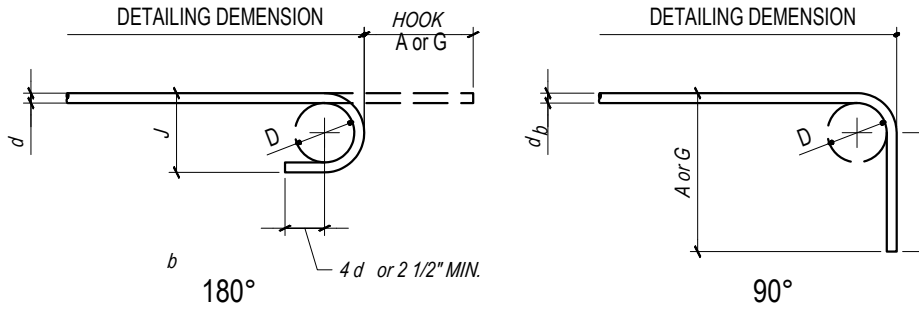


TABLE 1 - STANDARD HOOKS



RECOMMENDED END HOOKS, ALL GRADES				
BAR SIZE	FINISHED BEND DIAMETER D, in	180° HOOKS		90° HOOKS
		A or G, in	J, in	A or G, in
#3	2 1/4	5	3	6
#4	3	6	4	8
#5	3 3/4	7	5	10
#6	4 1/2	8	6	12
#7	5 1/4	10	7	14
#8	6	11	8	16
#9	9 1/2	15	11 3/4	19
#10	10 3/4	17	13 1/4	22
#11	12	19	14 3/4	24
#14	18 1/2	27	21 3/4	31
#18	24	36	28 1/2	41

TENSION DEVELOPMENT LENGTH Ld IN INCHES	
BAR SIZE	Ld
# 3	12
# 4	17
# 5	21
# 6	25

TENSION DEVELOPMENT LENGTH AND TENSION SPLICE NOTES

1. THE ABOVE TABLE FOR TENSION DEVELOPMENT LENGTH IS BASED ON:
 - A) GR 60 DEFORMED REINFORCEMENT AND 4000 PSA CONC.
 - B) CLEAR SPACING OF REINFORCEMENT BEING DEVELOPED OR SPLICED NOT LESS THAN 2 db (DIAMETER OF BAR) AND CLEAR COVER NOT LESS THAN db.
 - C) CALCULATED BY EQ. (12-1) IN ACI-318-02 CHAPTER 12.
2. SPLICE LENGTH SHALL BE EQUAL TO THE DEVELOPMENT LENGTH TIMES 1.3
3. SPLICE LENGTH SHALL BE THE LARGER OF:
 - A) DEVELOPMENT LENGTH OF LARGER BAR.
 - B) SPLICE LENGTH OF SMALL BAR.



New York City Housing Authority
 Capital Projects Division
 Design Department
 90 Church Street, 10th Floor
 New York, NY 10007

Title:

REBAR SCHEDULE

Contract Name:

GROUNDS REQUIREMENT

Contract No.

GD XXXXXXX

Drawn by:
G. SOUKAS

Checked by:
K. MARSHAL

Scale:

Not to Scale

Date:

January 2017

Drawing No.

WAL- 11