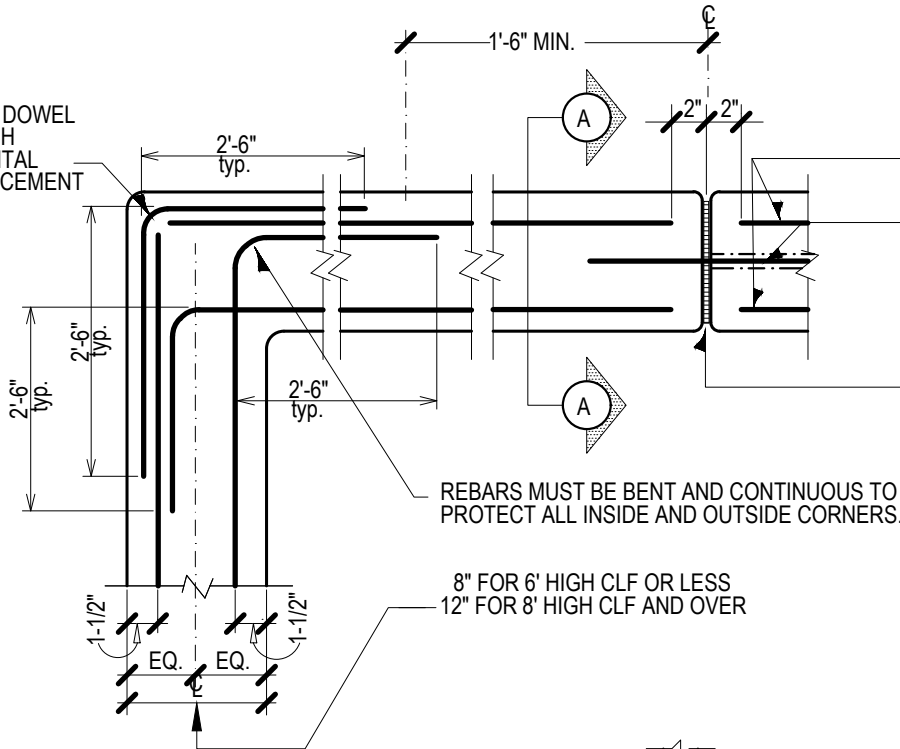


CORNER DOWEL TO MATCH HORIZONTAL REINFORCEMENT



#4 EACH FACE TOP AND BOTTOM - TYP. CONTINUOUS HORIZONTAL REINFORCEMENT

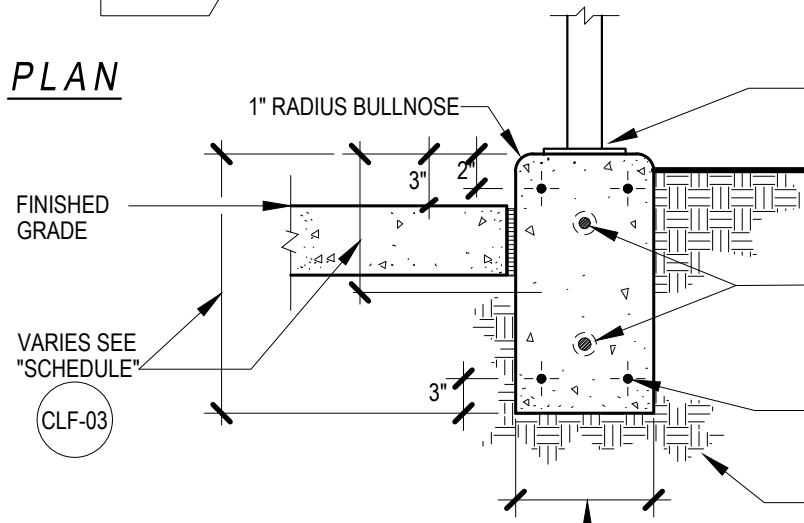
#5 DOWELS - ONE END SLEEVED - 2'-0" LONG AT EXPANSION JOINT. SEE SPECS FOR SPACING.

1/2" PREMOLDED EXPANSION JOINT AND SEALANT 25'-0" O.C.

REBARS MUST BE BENT AND CONTINUOUS TO PROTECT ALL INSIDE AND OUTSIDE CORNERS.

8" FOR 6' HIGH CLF OR LESS
12" FOR 8' HIGH CLF AND OVER

PLAN



MOUNTING PLATE

(SBF-37)

FIN. GRADE
-See Plans
SLEEVED DOWELS AT EXP. JOINTS
4" Clear
(Top & Bottom)
-Sleeve shall be 3/4" PVC pipe or approved equal.

3/8" DIAMETER CONTINUOUS REBAR.
-Top & Bottom

COMPACTED SUBGRADE

8" FOR 6' HIGH CLF OR LESS
12" FOR 8' HIGH CLF AND OVER

SECTION A-A

NOTE -
FENCE POST SHALL BE LOCATED A MINIMUM OF 18" FROM EXPANSION JOINT(S).

SEE DETAIL FOR REBAR SCHEDULE (WAL-11)



New York City Housing Authority
Capital Projects Division
Design Department
90 Church Street, 10th Floor
New York, NY 10007

Title:

**CONCRETE CURB
for Chain Link Fence**

Contract Name:

GROUNDS REQUIREMENT

Contract No.

GD XXXXXXX

Drawn by:
G. SOUKAS

Checked by:
K. MARSHAL

Scale:

Not to Scale

Date:

January 2017

Drawing No.

CUR- 10