

MALLEABLE OR CAST  
IRON SCREW CAP  
SEE SPECIFICATIONS

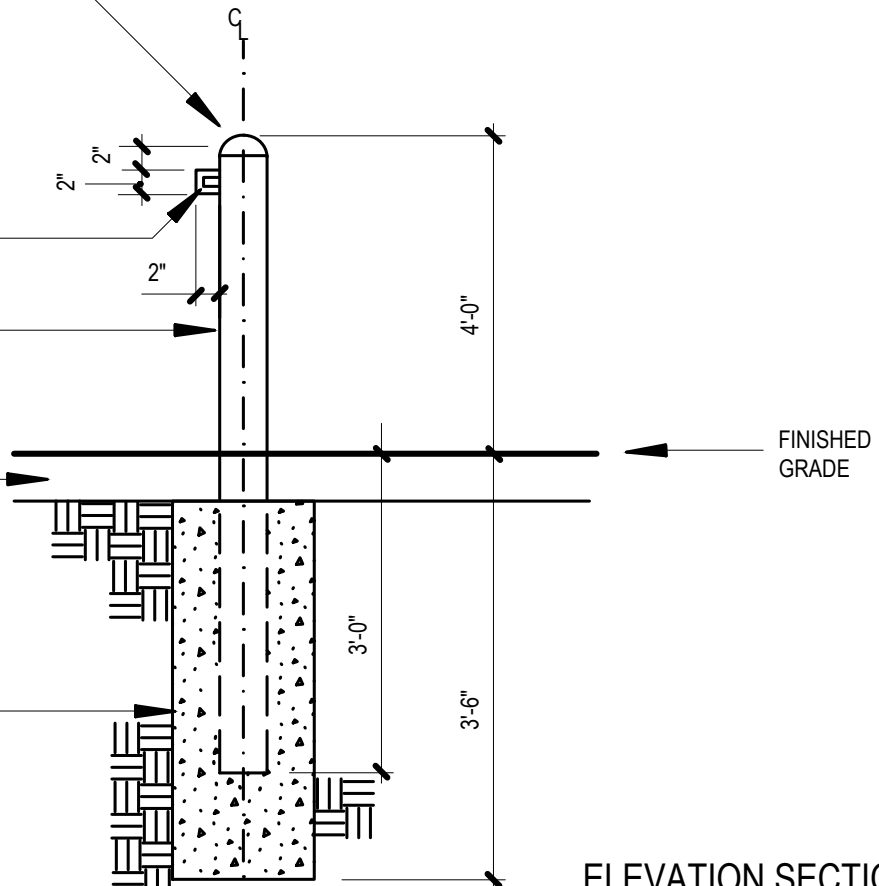
AS NECESSARY, SEE PLANS  
FOR GALVANIZED STEEL 5/8"  
U-BOLT, WELD COMPLETE  
GROUND SMOOTH

8" NOMINAL GALVANIZED  
STEEL PIPE (.500 WALL THICKNESS),  
FILL WITH CONCRETE. PAINT PIPE  
AND CAP "SAFETY YELLOW"-  
SEE SPECIFICATIONS.

FULL DEPTH PAVEMENT  
OR PLANTED AREA-  
SEE PLANS

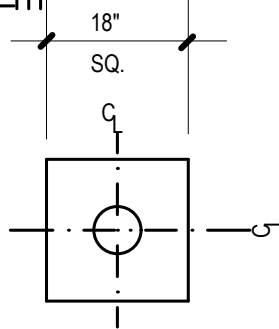
CONCRETE FOOTING

DRY, FIRM,  
UNYIELDING SUBGRADE



ELEVATION SECTION

NOTE: WHEN INSTALLING BOLLARD IN EXISTING  
PAVEMENT, SAWCUT 18" SQUARE IN PVMNT.  
AND PATCH W/ APPROPRIATE MATERIAL AFTER  
INSTALLATION. ONLY PROVIDE "U" BOLTS ON  
BOLLARDS LOCATED AS PAIRS, ALSO PROVIDE  
APPROPRIATE LF OF 3/8" STRAIGHT LINK GLVN.  
CHAIN AND CORRECT NUMBER OF PADLOCKS, IF  
CALLED FOR ON THE DRAWINGS-SEE SPECS.



PLAN



New York City Housing Authority  
Capital Projects Division  
Design Department  
90 Church Street, 10th Floor  
New York, NY 10007

Title:

**HEAVY DUTY (8")  
STEEL BOLLARD**

Contract Name:

**GROUNDS REQUIREMENT**

Contract No.

**GD XXXXXXX**

Drawn by:  
**G. SOUKAS**

Checked by:  
**K. MARSHAL**

Scale:

**Not to Scale**

Date:

**January 2017**

Drawing No.

**AME- 05**