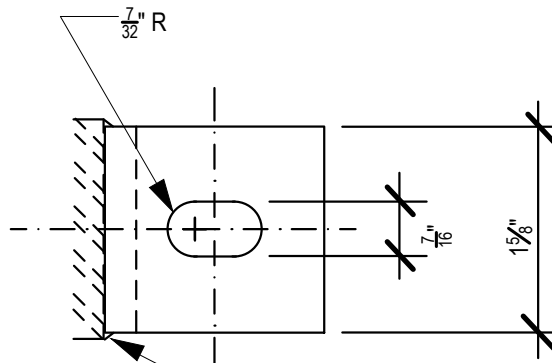
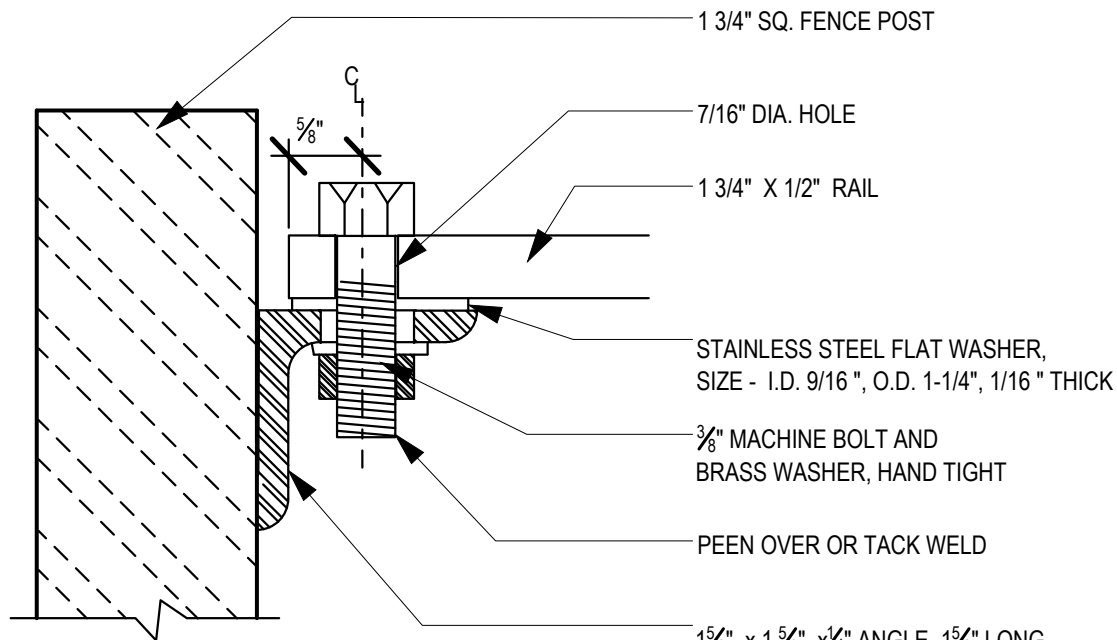


ELEVATION



ANGLE FULLY WELDED TO POST ON ALL (4) FOUR SIDES.

PLAN



SECTION

- 1 3/4" SQ. FENCE POST
- 7/16" DIA. HOLE
- 1 3/4" X 1/2" RAIL
- STAINLESS STEEL FLAT WASHER, SIZE - I.D. 9/16", O.D. 1-1/4", 1/16" THICK
- 3/8" MACHINE BOLT AND BRASS WASHER, HAND TIGHT
- PEEN OVER OR TACK WELD
- 15/8" x 1 5/8" x 1/4" ANGLE, 15/8" LONG. LEG FULLY WELDED TO POSTS ON ALL FOUR (4) SIDES.



New York City Housing Authority
 Capital Projects Division
 Design Department
 90 Church Street, 10th Floor
 New York, NY 10007

Title:

*ANGLE & BOLT for
 3'-0" Steel Bar Fence, 3'-6" & 4'-6"
 Alternate Picket Steel Bar Fence*

Contract Name:

GROUNDS REQUIREMENT

Contract No.

GD XXXXXXX

Drawn by:
 G. SOUKAS

Checked by:
 K. MARSHAL

Scale:

Not to Scale

Date:

January 2017

Drawing No.

SBF- 15