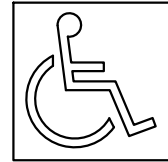


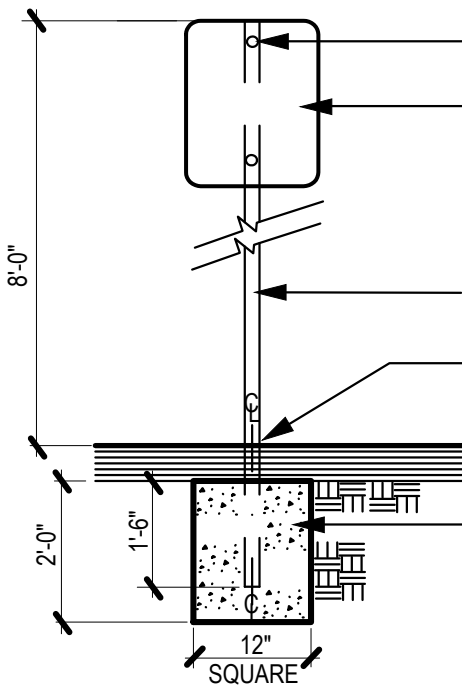
THE ACCESSIBILITY SYMBOL SHALL BE PAINTED ON THE PAVEMENT OF THE PARKING STALL AS SPECIFIED ON THE PLANS AND IN ACCORDANCE WITH THE "AMERICAN NATIONAL STANDARDS INSTITUTE". COLOR SHALL BE BLUE. SEE ASPHALT SPECIFICATIONS.

PROPORTIONS

SYMBOL SHALL CONTRAST WITH ITS BACKGROUND-EITHER LIGHT SYMBOL ON DARK PAVEMENT (ASPHALT) OR DARK SYMBOL ON LIGHT PAVEMENT (CONCRETE)



DISPLAY CONDITIONS



VANDAL PROOF BOLT - TYP.

ACCESSIBLE PARKING SIGN "SS56" 12" X 18" (STEEL) BY BEST SIGN SYSTEMS, MONTROSE, CO. (800)235-2378 OR APPROVED EQUAL. CONTRACTOR MUST SPECIFY POLE OR WALL MOUNT APPLICATION.

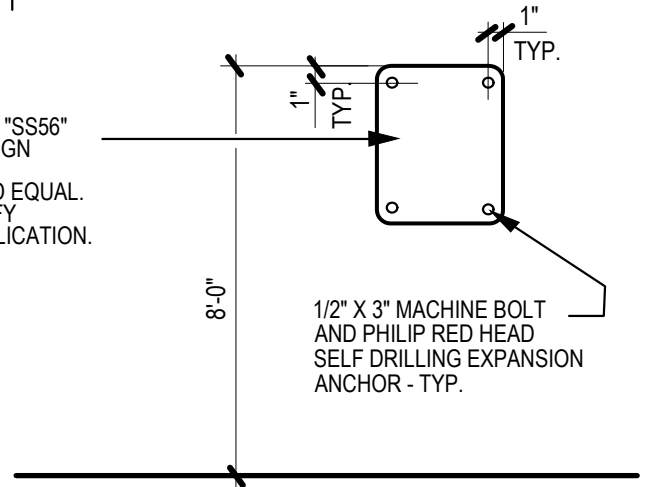
SCHEDULE 40 STEEL PIPE, 1 1/2" O.D., PRIMED AND PAINTED. COLOR-BLACK. SEE PAINT SPEC.

POST GROUTING (MISC-01)

FINISHED GRADE - SEE PLANS

CONCRETE FOOTING AS PER CONCRETE SPECS. NOTE THAT TOP OF FOOTING IS BELOW FULL DEPTH PAVEMENT. IN PLANTED AREAS, TOP OF FOOTING SHALL BE 6" BELOW FINISHED GRADE.

POLE MOUNT



1/2" X 3" MACHINE BOLT AND PHILIP RED HEAD SELF DRILLING EXPANSION ANCHOR - TYP.

WALL MOUNT



New York City Housing Authority
Capital Projects Division
Design Department
90 Church Street, 10th Floor
New York, NY 10007

Title:

**SIGN and SYMBOL
for ACCESSIBLE
PARKING SPACE**

Contract Name:

GROUNDS REQUIREMENT

Contract No.

GD XXXXXX

Drawn by:
G. SOUKAS

Checked by:
K. MARSHAL

Scale:

Not to Scale

Date:

January 2017

Drawing No.

AME- 11