

DEFORMED BAR TENSION DEVELOPMENT LENGTH FOR NORMAL WEIGHT STONE CONCRETE & UNCOATED BARS				
BAR SIZE	3000 PSI CONCRETE		4000 PSI CONCRETE	
	CASE I	CASE II	CASE I	CASE II
#3	17	25	15	22
#4	22	33	19	29
#5	28	42	24	36
#6	33	50	29	43
#7	48	72	42	63
#8	55	83	48	72

DEFORMED BAR TENSION/ COMPRESSION DEVELOPMENT AND LAP SPLICE LENGTH (l _d) FOR UNCOATED BARS AS PER ACI 530-08		
BAR SIZE	1500 PSI MASONRY	
#3	16	
#4	21	
#5	26	
#6	43	
#7	60	
#8	92	

DEFORMED TENSION BAR NOTES:

- FOR HORIZONTAL REINFORCEMENT WITH 12 INCH OR MORE FRESH CONCRETE CAST BELOW IT, TENSION DEVELOPMENT LENGTH/ TENSION LAP SPLICE LENGTH SHALL BE 1.3x THE VALUES GIVEN.
- FOR EPOXY-COATED BARS:
 - WHERE CONCRETE COVER IS LESS THAN 3x BAR DIAMETER, OR CLEAR SPACING IS LESS THAN 6x BAR DIAMETER, TENSION DEVELOPMENT LENGTH/ TENSION LAP SPLICE LENGTH SHALL BE 1.5x THE VALUES GIVEN.
 - WHERE CONCRETE COVER IS EQUAL TO OR GREATER THAN 3x BAR DIAMETER AND CLEAR SPACING IS GREATER THAN 6x BAR DIAMETER, TENSION DEVELOPMENT LENGTH/ TENSION LAP SPLICE LENGTH SHALL BE 1.2x THE VALUES GIVEN.

CASE I: CLEAR SPACING OF BARS BEING DEVELOPED OR SPLICED NOT LESS THAN BAR DIAMETER, CLEAR COVER NOT LESS THAN BAR DIAMETER, AND STIRRUPS OR TIES THROUGHOUT DEVELOPMENT LENGTH NOT LESS THAN THE CODE MINIMUM OR CLEAR SPACING OF BARS BEING DEVELOPED OR SPLICED NOT LESS THAN 2x BAR DIAMETER AND CLEAR COVER NOT LESS THAN BAR DIAMETER.

CASE II: OTHER CASES

DEFORMED BAR TENSION LAP SPLICE - CLASS B FOR NORMAL WEIGHT STONE CONCRETE & UNCOATED BARS				
BAR SIZE	3000 PSI CONCRETE		4000 PSI CONCRETE	
	CASE I	CASE II	CASE I	CASE II
#3	22	33	19	28
#4	29	43	25	37
#5	36	54	31	47
#6	43	65	37	56
#7	63	94	54	81
#8	72	107	62	93

DEFORMED BAR TENSION/ COMPRESSION DEVELOPMENT LENGTH (l _d) FOR UNCOATED BARS AS PER ACI 530-08	
BAR SIZE	
#3	14
#4	18
#5	13
#6	27
#7	32
#8	36

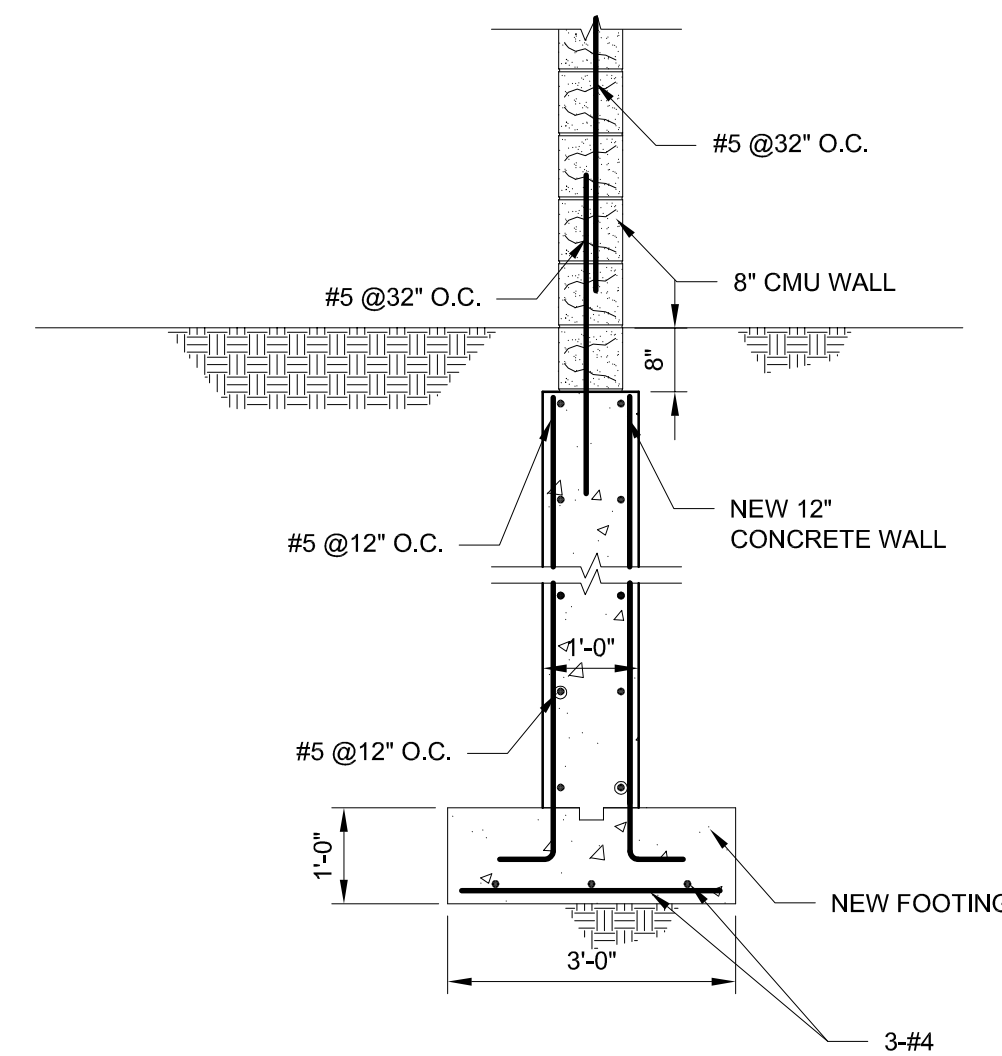
DEFORMED BAR TENSION/ COMPRESSION LAP SPLICE LENGTH (l _d) FOR UNCOATED BARS AS PER ACI 530-08	
BAR SIZE	
#3	18
#4	24
#5	30
#6	36
#7	42
#8	48

NOTES:

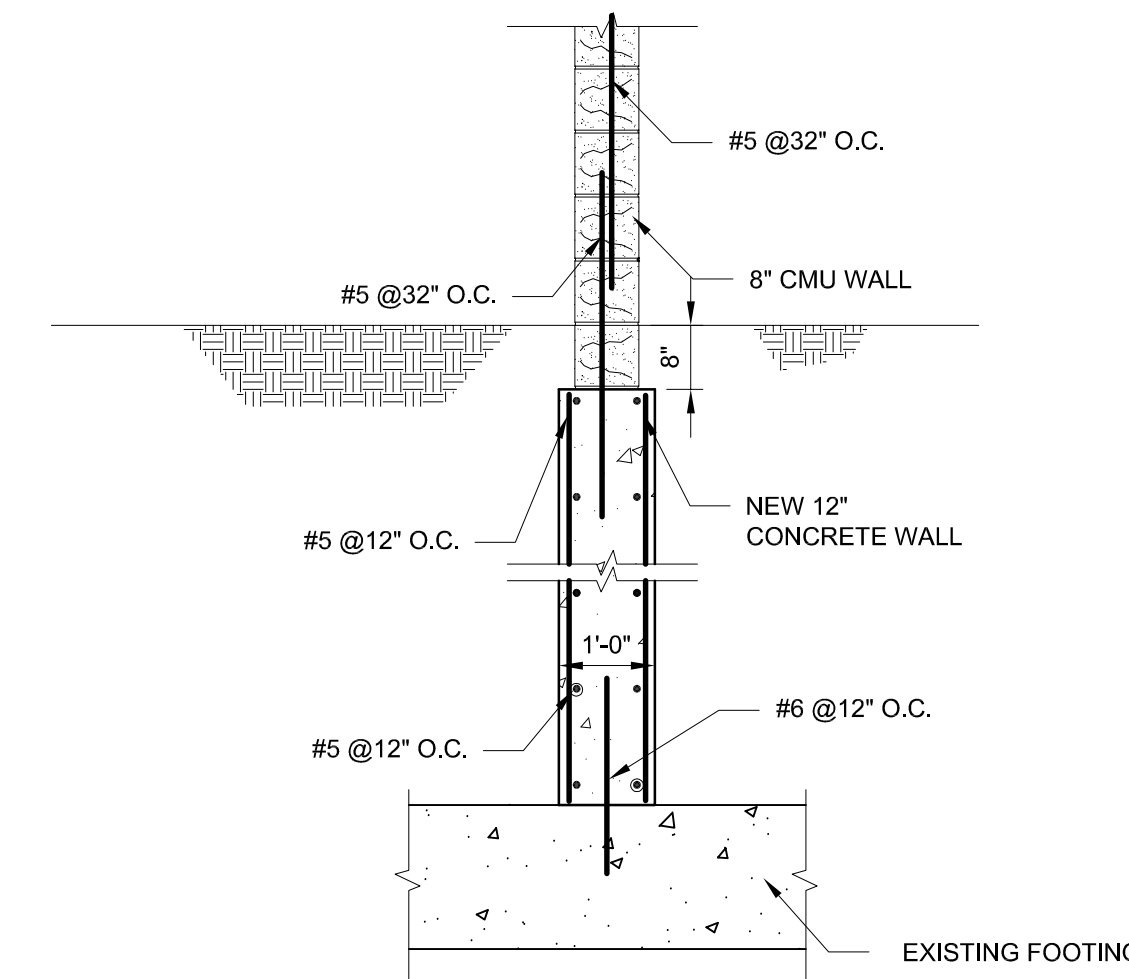
- THE ENGINEER SHOULD CHOOSE THE TABLES BASED ON THE APPROPRIATE VERSION OF ACI-530 AS DICTATED BY LOCAL ORDINANCES.
- THE DEVELOPMENT LENGTH OF EPOXY COATED REBAR SHOULD BE TAKEN AS 1.5x THE VALUE OF GIVEN ABOVE.

DEFORMED BAR COMPRESSION DEVELOPMENT LENGTH FOR NORMAL WEIGHT STONE CONCRETE & UNCOATED BARS		
BAR SIZE	3000 PSI CONCRETE	4000 PSI CONCRETE
#3	9	8
#4	11	10
#5	14	12
#6	17	15
#7	20	17
#8	22	19

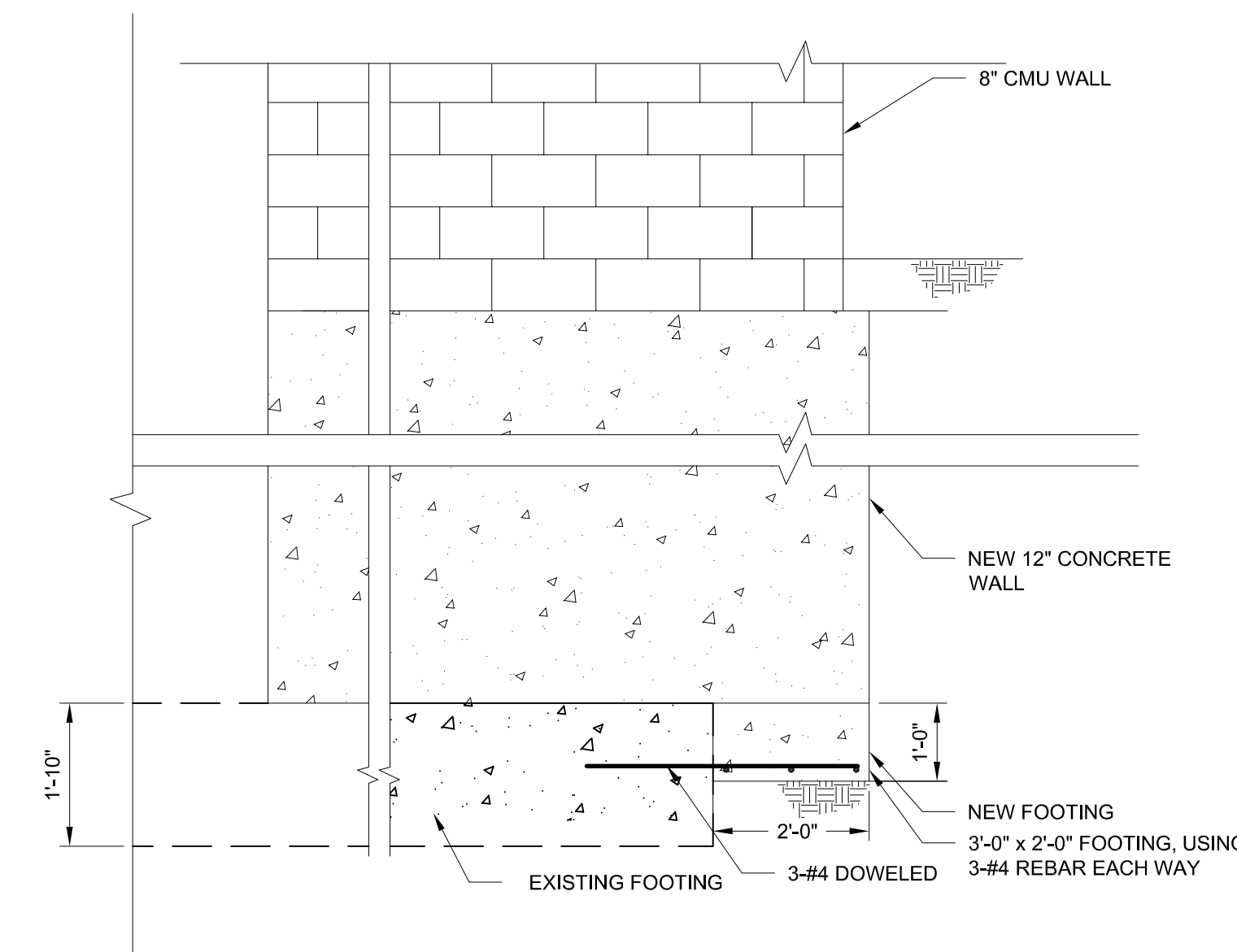
DEFORMED BAR COMPRESSION LAP SPLICE FOR NORMAL WEIGHT STONE CONCRETE & UNCOATED BARS		
BAR SIZE	3000 PSI CONCRETE	4000 PSI CONCRETE
#3	12	12
#4	15	15
#5	19	19
#6	23	23
#7	27	27
#8	30	30
#9	34	34
#10	39	39
#11	43	43



2 SECTION
1/2" = 1'-0"



1 SECTION
1/2" = 1'-0"



3 SECTION
1/2" = 1'-0"

DOB APPROVAL STAMP

ARCHITECT:
ARCHITECTURE IN FORMATION
New York, NY (212)-714-1006

STRUCTURAL:
Gedeon GRC CONSULTING
ENGINEERS • PLANNERS • CONSTRUCTION MANAGERS
Gedeon GRC Consulting
100 Overlook Center, 2nd Floor, Princeton, NJ 08540
(609)-874-0330

MEP/FP:
MOROZOV
Morozov Engineering DCP
1460 Broadway New York, NY 10036
(212)-330-7634

LIGHTING:
KNL
Kugler Ning Lighting
247 W 37th St. Suite 1502, New York, NY 10018
(212)-382-2100

KITCHEN:
EFriedman
EFriedman Associates, Inc.
2237 New York Ave. Brooklyn, NY 11234
(718)-338-5800

AV:
TECHCHIX
TechChix LLC
130-44 128th St. Ozone Park, NY 11420
(718)-576-2330

Revision Number	Revisions:	Date

NYC Department of Design and Construction

DIVISION OF PUBLIC BUILDINGS
CAPITAL PROJECT NUMBER:
2004

PROJECT
Mariner's Harbor Houses - Community Center Renovation
22 Roxbury St, Building N° 5
Staten Island, NY, 10303
DOB Job N°:
S00591005-11

FOR THE:
New York City Housing Authority

DRAWING TITLE:
FOUNDATION SECTIONS

DOB NOW Job # S00591005-S1

SEAL & SIGNATURE	Date
	10/11/2021
	Project No: 2004
	Drawn By: Z.C.
	Checked By: M.G.
	Drawing No: S-201.00
CADO FILE No:	OF